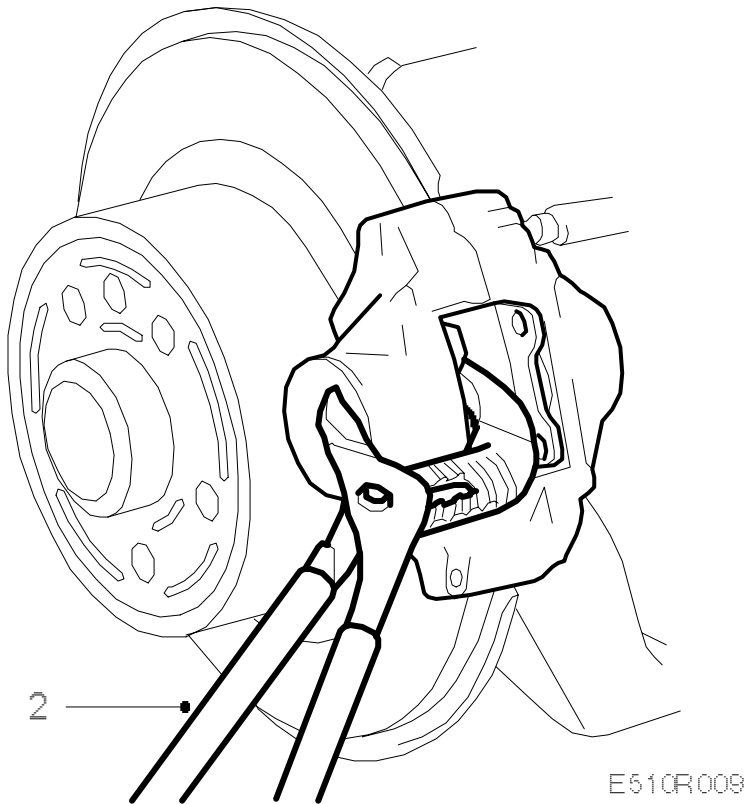
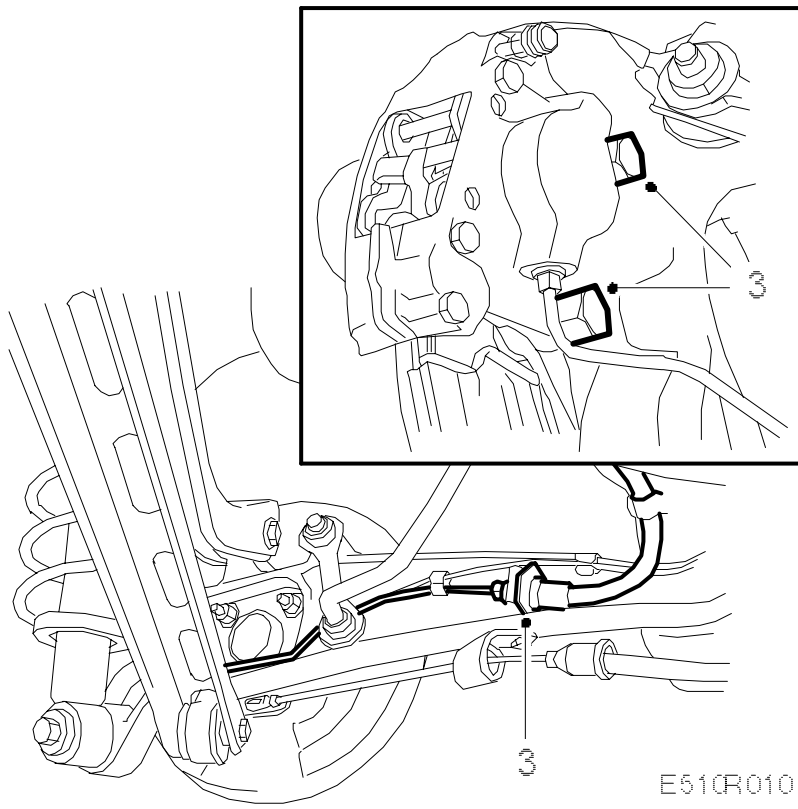


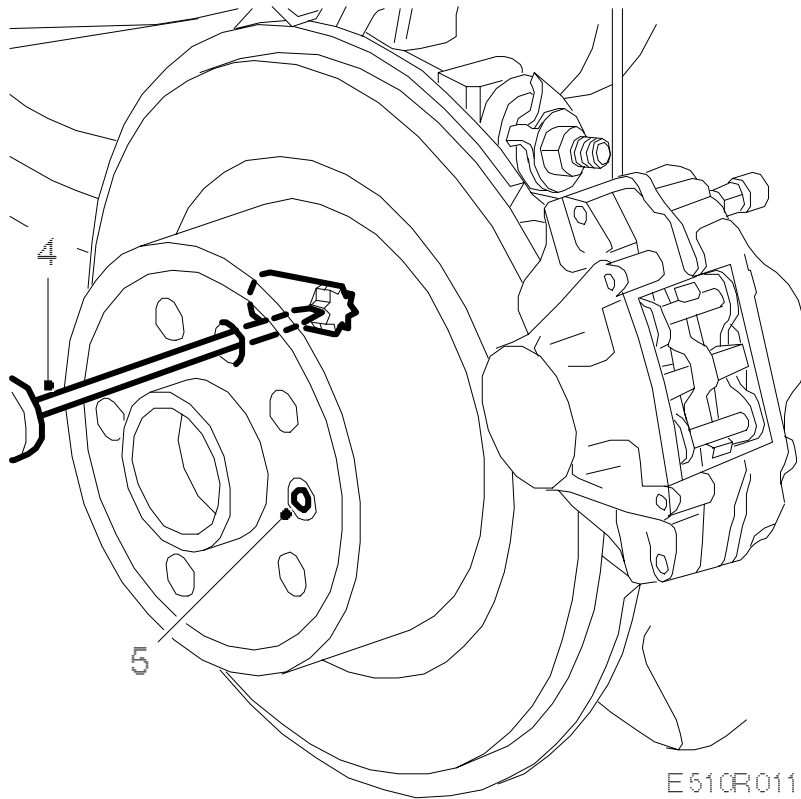
**Brake disc, rear wheel****To remove**

1. Raise the car and remove the wheel.
2. Press the brake pistons back, using a pair of slip-joint pliers.
- 3.

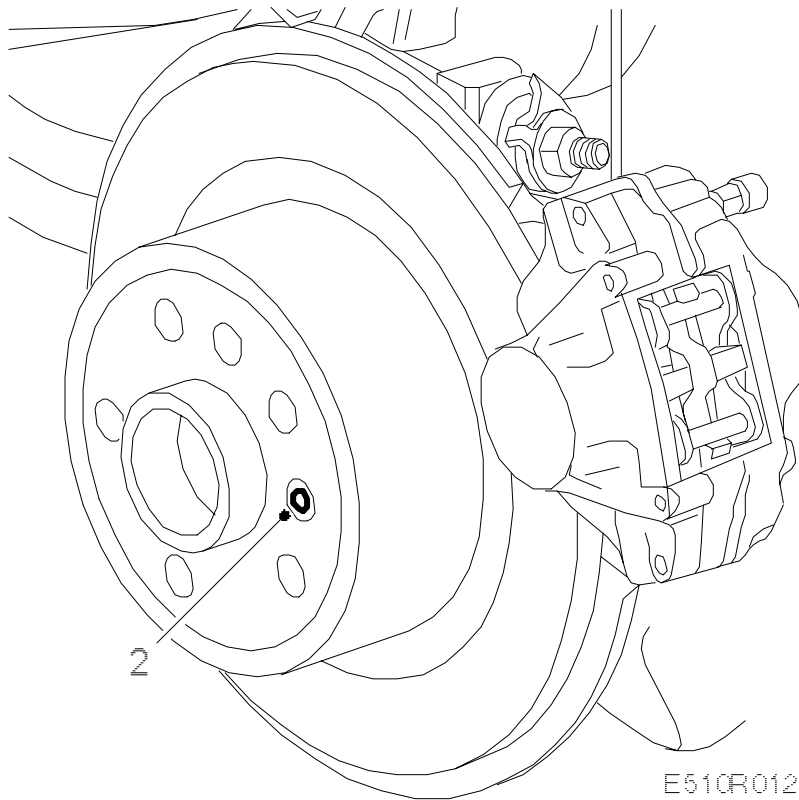
Remove the brake caliper's two retaining bolts, undo the brake line's mounting at the link arm and hang up the caliper.



4. Slacken the hand brake adjustment.



5. Remove the brake disc retaining bolt and take off the brake disc.

**To fit**

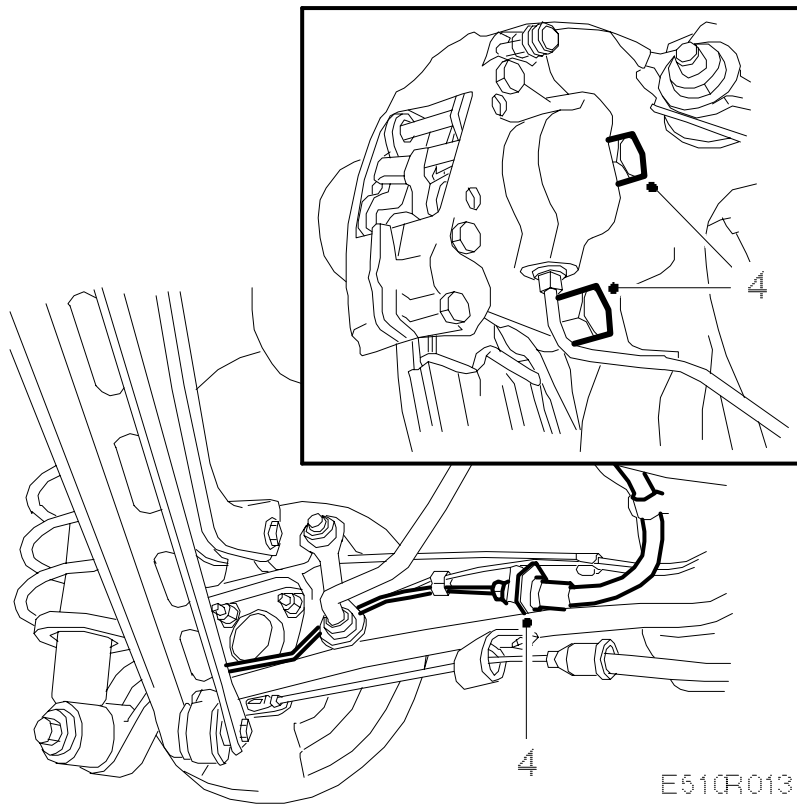
1. Before starting to refit the brake disc, wash it clean and check that its surface in contact with the hub is free from rust, burrs and the like.
2. When fitting the brake disc, check that the hub's surface in contact with it is not rusty or dirty.

Fit the brake disc on the hub, apply Loctite 242 to the brake disc's locking screws and tighten them.

**Tightening torque 10 Nm (7.4 lbf ft)**

3. Adjusting the handbrake, refer to [Adjusting the handbrake shoes](#).
- 4.

Apply locking compound 74 96 268 on the brake caliper retaining screws, fit the brake caliper and fasten the brake line mounting.

**Tightening torque 80 Nm (59 lbf ft)**

5. Fit the wheel, see [Wheels](#).

**Tightening torque 110 Nm (81 lbf ft)**

Lower the car and depress the brake pedal to force out the brake pads.

Check the level of the brake fluid.

Drive the car on test and check the operation of the brakes.