

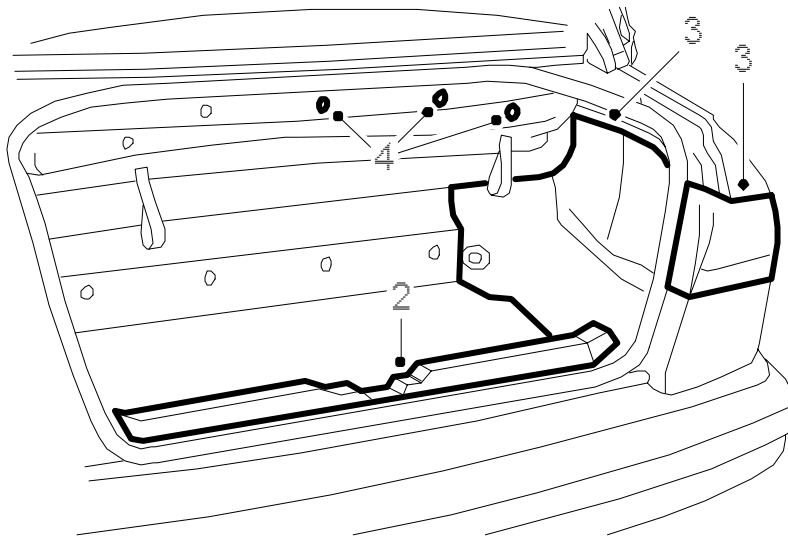
Shear pin and lock pin, soft top cover drive mechanism

Removing

Important

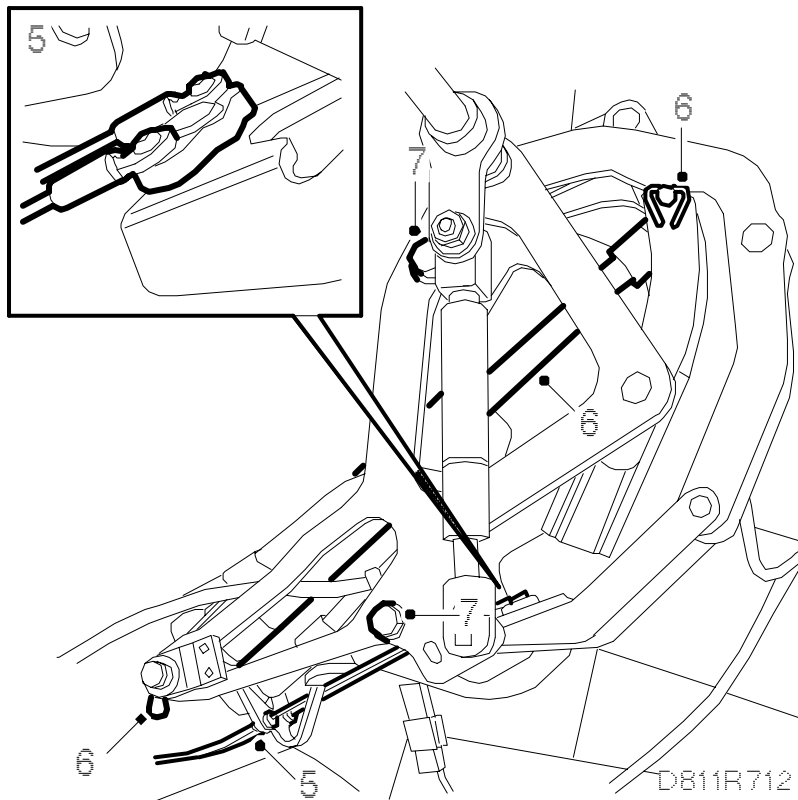
Replace both shear pins and both locking pins at the same time.

1. Manoeuvre the soft top into closed position with the soft top cover in a vertical position.
2. Open the luggage compartment and remove the scuff plate.



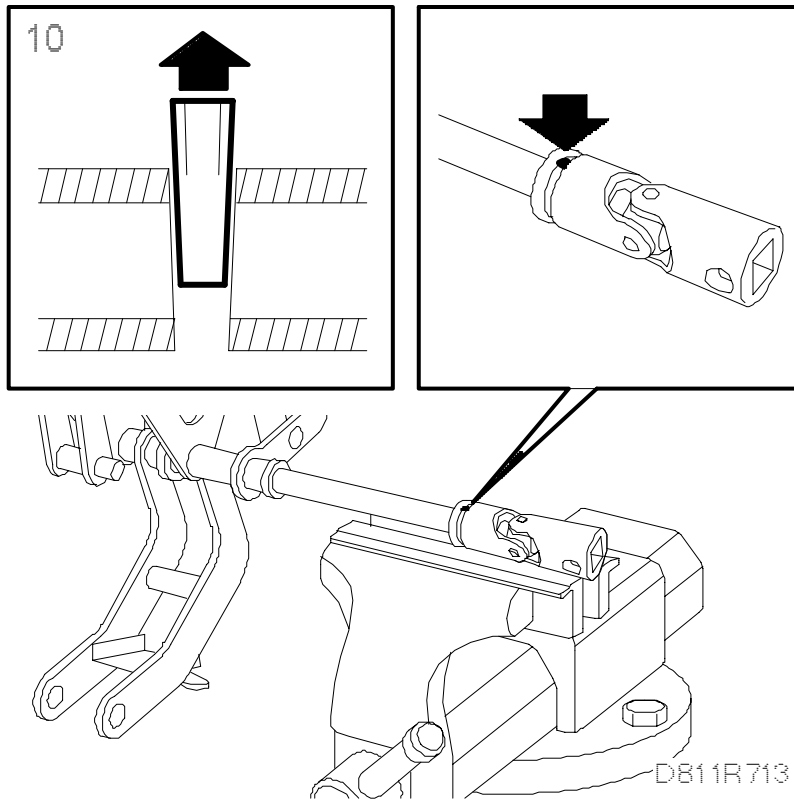
D811R711

3. Loosen the right-hand side trim in the luggage compartment and fold it aside. Remove the right-hand rear light.
4. Remove the screws on the right-hand side of the soft top storage. Fold down the trim.
5. Loosen the nuts that secure the cables for the mechanism and remove the clips.



6. Remove the clips and stub axles that secure the cylinder. Lift away the cylinder and lay it at the front of the luggage compartment.
7. Remove the bolts that secure the mechanism and lift away the mechanism.
8. Unhook the gas spring's lower mounting.
9. Move the O-ring to the side.
- 10.

Place the mechanism in a vise. Use a drift and tap out the shear pin. Note the universal joint position and loosen the universal joint and O-ring.



Important

Tapered shear pins and locking pins can only be removed/fitted in one direction. Be careful not to damage the mechanism.

11.

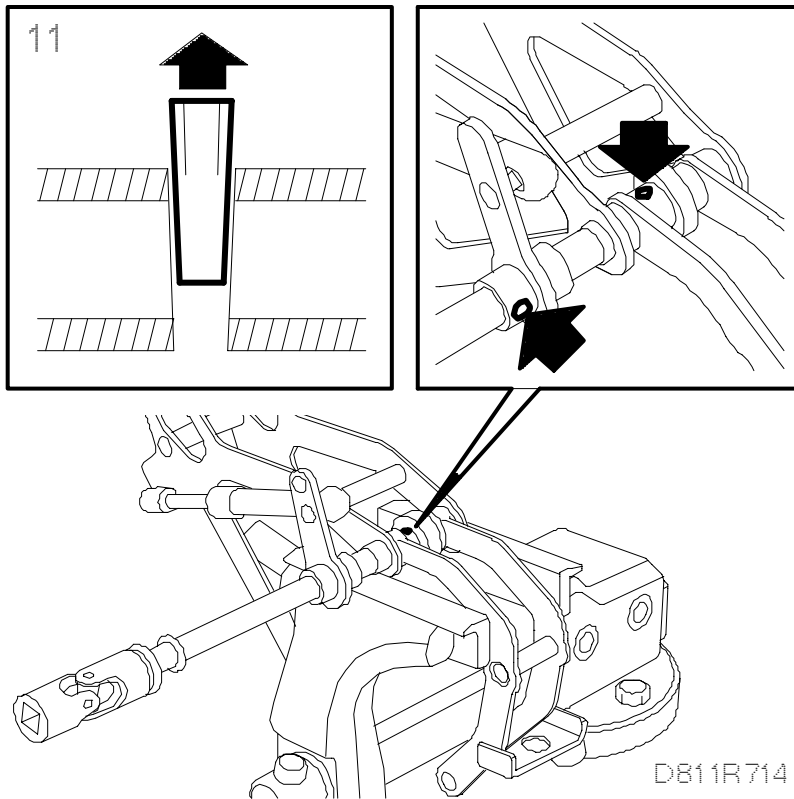
Use a drift to tap out the lock pins.

Important

Be careful not to damage the mechanism.

Important

Replace both shear pins and both locking pins at the same time.



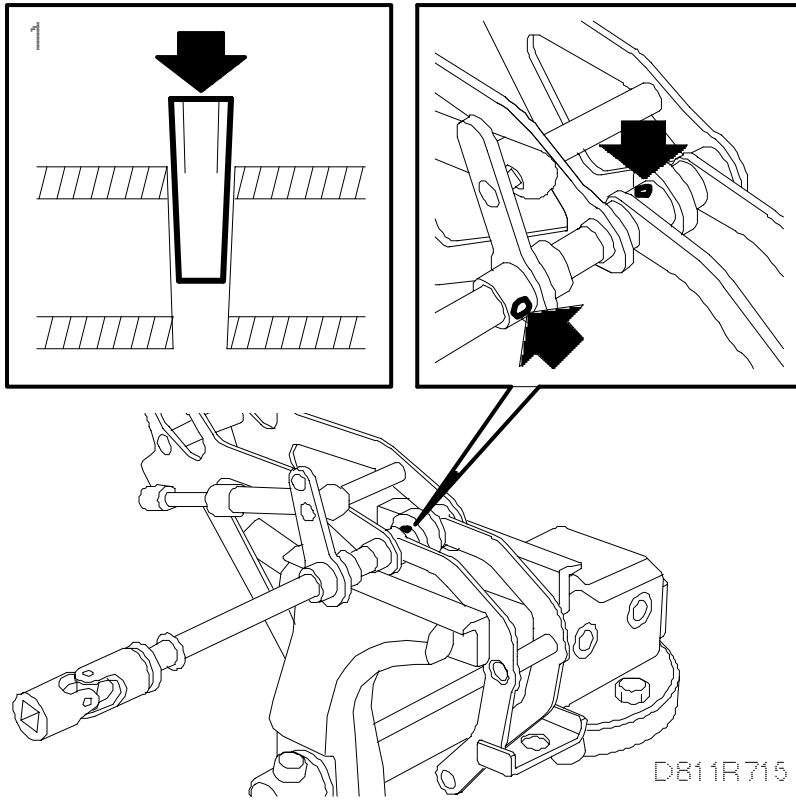
Fitting

1.

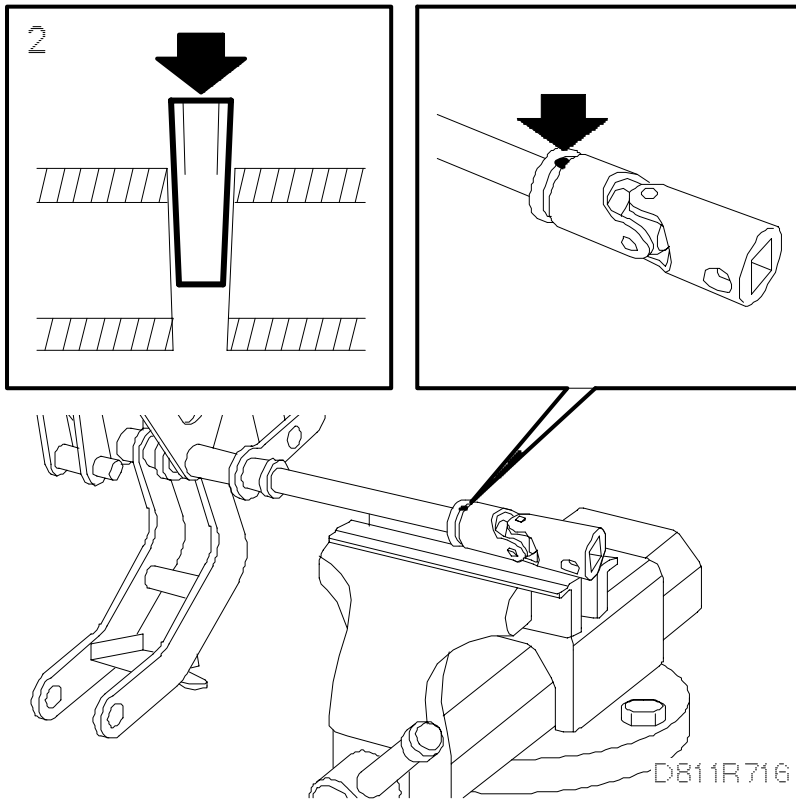
Tap in new lock pins.

Important

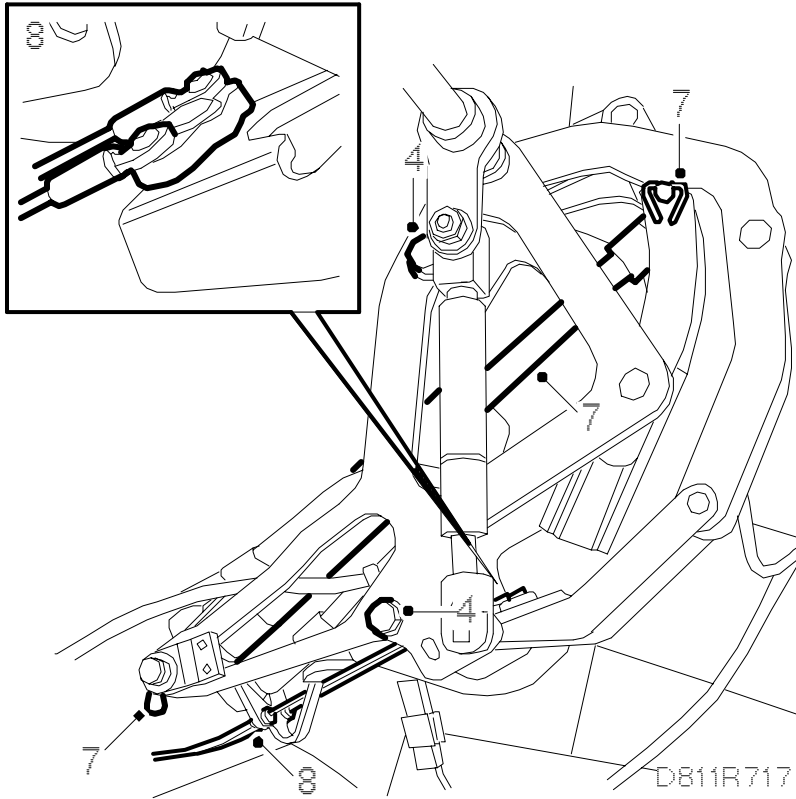
Tapered shear pins and locking pins can only be removed/fitted in one direction. Be careful not to damage the mechanism.



2. Tap in a new shear pin.

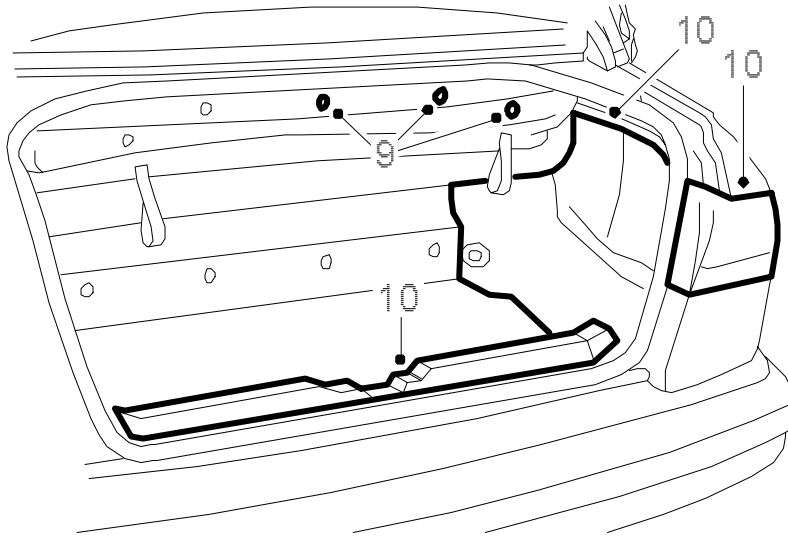


3. Replace the O-ring over the shaft and fit the universal joint. Make sure the universal joint is positioned correctly.
4. Fit the mechanism and tighten the bolts.



5. Fit the gas spring's lower mounting.
6. Use an extension and press back the mechanism and gas spring to the correct position so that the cylinder can be fitted.
7. Fit the cylinder and fit the stub axles and clips.
8. Fit the cables and clips.
- 9.

Refit the upholstery at the soft top storage.



D811R718

10. Fit the side trim in the luggage compartment.

Fit the right-hand rear light and the scuff plate.

11. Check the latch adjustment on the soft top cover. See [Adjusting the soft top cover](#).

Important

The shear pin may break if the soft top cover lock is incorrectly adjusted. It is therefore vital that you check the adjustment of the soft top cover lock.

12. Manoeuvre the soft top through at least 5 complete cycles in order to check soft top function. Check that the first and fifth bows do not make contact with the soft top cover.